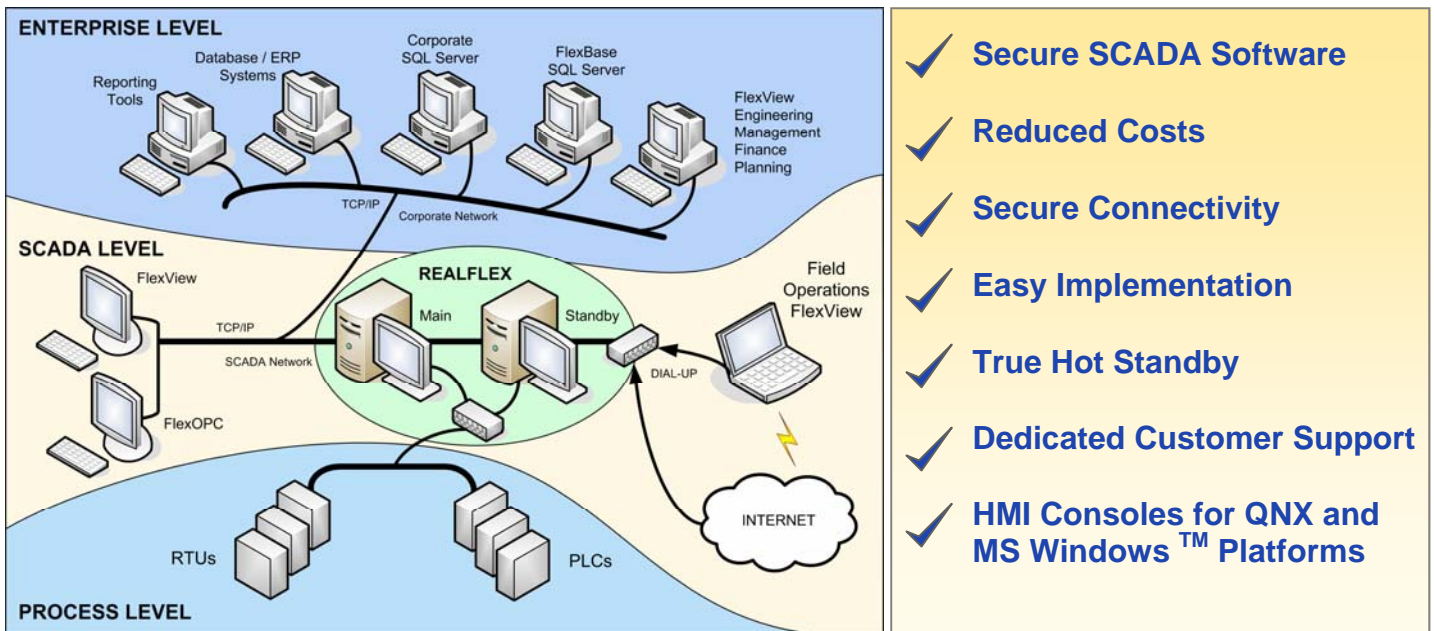


A TRUE REAL-TIME SCADA SOFTWARE PACKAGE FOR SCADA AND PROCESS CONTROL APPLICATIONS



1 Choice of System Configurations

Where security is paramount, RealFlex 6 provides both a server and HMI on a QNX6 operating system. The Photon runtime HMI provides the user with a superior graphical control and monitoring system.

Microsoft Windows users have the option of using RealFlex's FlexView HMI. This gives the user the comfort of a secure QNX platform while benefiting from working in a familiar environment.

2 Security and Reliability

RealFlex 6 achieves superior security with the QNX6 operating system combined with dynamically encrypted communications.

RealFlex 6 has a high performance SCADA engine with efficient design making it suitable for large databases. The QNX6 real-time operating system enables the products to achieve Speed, Stability and Security. Millisecond Timestamp stamping allows users to track faults with high precision.

3 Low Cost of Ownership

The inherent reliability of the product means reduced maintenance costs, less site trips and lack of constant patching/upgrades.

Low implementation and setup time plus minimal training lead to reduced costs.

Secure automatic migration from legacy RealFlex 4 systems ensures integrity of all the data and minimal re-commissioning time is required.

4 Hot Standby

The true hot standby allows a fast switch over to keep the system operating 24 hours a day, 365 days a year.

Hot standby provides redundancy to allow processing to continue during failure or maintenance. Control and monitoring can continue due to fast switchover. In the event of a system failover, clients are automatically connected to the backup system without any interruption.

RealFlex 6



5 Best of Both Worlds

RealFlex provides the speed, stability and security of a server running on the QNX platform. Users have the option of running the HMI on QNX Photon or Microsoft Windows as required.

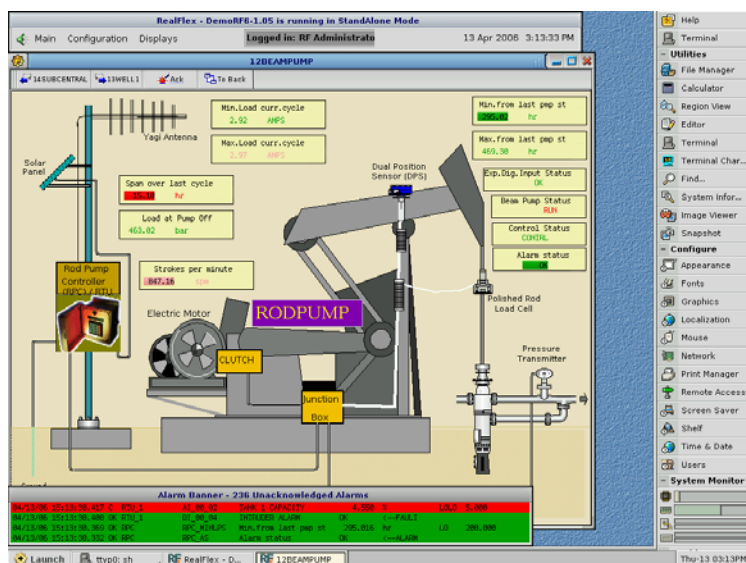
FlexWin clients on Microsoft Windows provides Operator Interface, SQL database, Web Page support, OPC Server and Client giving access to a huge number of applications.

6 Customer Support System

Utilizing the RealFlex Online Support System (ROSS) and backed up by dedicated account managers, we are committed to providing first class support, engineering services and technical expertise.

Main Features:

- True real-time SCADA software
- Photon Runtime HMI on QNX6
- FlexView HMI on Microsoft Windows
- Fast Hot Standby configuration
- Support for latest hardware
- High Performance for large databases
- Millisecond Timestamp
- Real-time, Historical, Alarms and Event
- Calculation & CSL Script Language
- Additional FlexWin clients—FlexBase, Flex-Web, FlexOPC, RFLink
- Extensive range of standard protocols supported e.g. DNP3, IEC870 and ModBus
- Supports sending messages on alarm to pagers, cell phones, faxes or email
- Automatic migration from Legacy RealFlex 4 system
- Migration Kit for RealFlex 4 drivers
- Server API for QNX applications
- Custom Development Kit available



RealFlex 6 Photon Runtime HMI

About RealFlex Technologies

RealFlex software provides customers with secure SCADA software. Our flagship product RealFlex 6, runs on the QNX operating system while a range of additional software gives the customer a large degree of flexibility on their system.

Servicing the SCADA market worldwide since 1982, RealFlex software is used by customers in more than 40 countries.

International Headquarters

RealFlex Technologies Ltd.
Limerick Business Park
Raheen Business Centre
Limerick
IRELAND
Tel: +353 (0)61 308884
Fax: +353 (0)61 308883

Email: info@realflex.com
Web: www.realflex.com

American Headquarters

RealFlex Technologies Ltd.
2218 Northpark Drive, Suite 202
Kingwood, Houston
Texas 77339
USA
Tel: +1 281 348-2341
Fax: +1 281 348-2340

Email: info@realflex.com
Web: www.realflex.com

Russian Headquarters

RealFlex Technologies Ltd.
Chernyshevskogo 88
410004
Saratov
RUSSIA
Tel: +7 8452 226418
Fax: +7 8452 226419

Email: info@realflex.com
Web: www.realflex.ru